

钢包烘烤器
Ladle dryer



钢包烘烤器一
Ladle dryer 1



钢包烘烤器二
Ladle dryer 2

大型钢坯保温炉
Large billet holding furnace



大型钢坯保温炉
Large billet holding furnace

熔铝炉
Aluminium melting furnace



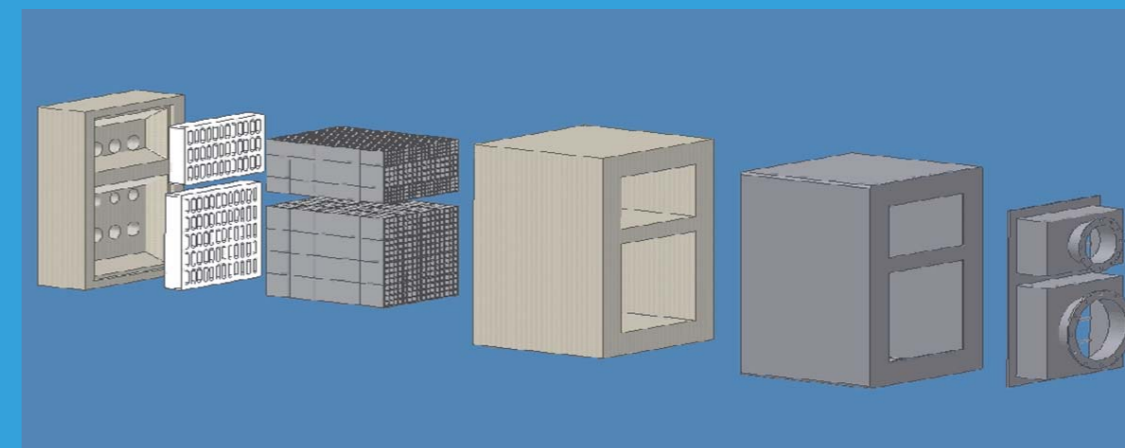
熔铝炉
Aluminium melting furnace

保护气氛罩热处理炉
Protective atmosphere bell type heat treatment furnace



保护气氛罩热处理炉
Protective atmosphere bell type heat treatment furnace

- 粉尘处理用环形转底炉
Rotary hearth furnace for dust treatment
- 烧结机点火器
Ignitor for sintering machine
- 各类用途实验炉
All-purpose experimental furnaces



BSIET工业炉热工产品手册

Manual of Thermal Products for Industrial Furnaces

联系方式 (Contact): 电话 (Tel): +86-10-88298711 88298716 13701226139 13581953890
 传真 (Fax): +86-10-88298731 网址 (Website): www.bsiet.com
 地址 (Address): 北京市石景山路 60 号 No. 60 Shijingshan Road, Beijing, P. R. China
 邮政编码 (Postal code): 100043



北京首钢国际工程技术有限公司
BEIJING SHOUGANG INTERNATIONAL ENGINEERING TECHNOLOGY CO.,LTD.

首钢国际工程公司充分利用企业更了解生产实践的优势，在加热炉领域新技术、新产品的开发和应用方面，始终走在行业前列，历经多年工程积累，掌握了一系列具有自主知识产权的技术，形成了以燃烧设备、常用热工设备、炉用机械设备和多项成套设备为主的产品系列和 EPC（设计、采购、施工）、BOT（建设、营运、移交）、合作研发等多种形式的客户合作模式，以一流的技术、一流的产品、一流的服务，深受广大用户好评。

BSIET has, due to the advantage of superior understanding of the production practice of the enterprise, been always in the leading position in the industry in the aspects of development and application of new technologies and new products in the field of industrial furnaces. BSIET, through years of engineering accumulation, has developed a series of technologies with independent intellectual property rights and formed the product series mainly manifested by combustion equipment, conventional thermal equipment, mechanical equipment for furnaces and numbers of complete sets of equipment and varieties of customer cooperation modes such as EPC (engineering, procurement, construction), BOT (build, operate, transfer), cooperative development and so on that are widely praised by the customers for the first-class technologies, first-class products and first-class services.

单体设备 Individual equipment

燃烧装置 Combustion equipment

辐射（平焰）烧嘴系列、调焰烧嘴系列

- 根据用户热工工况配置各类型烧嘴，达到最佳供热效果，适用加热炉、热处理炉等各类炉型
- 适用燃料：Mix-gas、COG、NG、LG、液态燃料等



混合煤气调焰烧嘴
Mixed gas flame-adjusting burners



天然气烧嘴
Natural gas burners

Radiation (flat-flame) burner series and flame-adjusting burner series

- All kinds of burners can be arranged for optimum heating effect according to customers' thermal conditions and are applicable to varieties of furnaces such as reheating furnaces and heat treatment furnaces, etc.
- Applicable fuel: Mix-gas, COG, NG, LG and liquid fuel, etc.



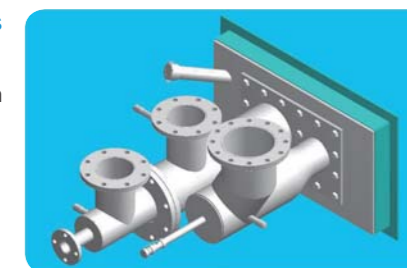
辐射（平焰）烧嘴
Radiation (flat-flame) burners

低 NOx 调焰烧嘴系列（专利产品）

- 火焰长度可调，最大可达 6m，温度均匀
- NOx 排放可低于 40ppm
- 适用燃料：Mix-gas、COG、NG

Low NOx flame-adjusting burner series (patented)

- Flame length can be adjusted up to 6m and temperature is uniform
- NOx emission is lower than 40ppm
- Applicable fuel: Mix-gas, COG and NG



低 NOx 调焰烧嘴
Low NOx flame-adjusting burners

单蓄热式烧嘴系列、双蓄热式烧嘴系列（专利产品）

- 根据用户炉型直接选用或设计最适宜的蓄热式烧嘴
- 蓄热体均采用优质小球或蜂窝体，具有寿命长，维护便捷，高效节能的优点
- 适用燃料：Mix-gas、COG、NG 适用于单蓄热烧嘴；BFG 或低热值煤气适用于双蓄热式烧嘴

Single regenerative burner series and double regenerative burner series (patented)

- The most suitable regenerative burners can be directly selected or designed according to the customers' furnace types
- Good-quality granule or beehive are adopted as the regenerators characterized by long service life, easy maintenance, high efficiency and energy saving
- Applicable fuel: Mix-gas, COG and NG are applicable to the single regenerative burners; BFG or low-calorific-value gas are suitable for the double regenerative burners



蓄热体小球
Regenerator granule



双蓄热式烧嘴
Double regenerative burners



单蓄热式烧嘴
Single regenerative burners

各类辐射管烧嘴、自身预热烧嘴

- 适用燃料：Mix-gas、COG、NG、LG
- 烧嘴能力：0.1-0.5MW
- 应用炉型：冷轧热处理炉，辊底式热处理炉等

All kinds of radiant tube burners, self-preheating burners

- Applicable fuel: Mix-gas, COG, NG and LG
- Capacity of burners: 0.1-0.5MW
- Applicable furnaces: heat treatment furnace for cold rolling and roller hearth heat treatment furnace, etc.



自身预热烧嘴
Self-preheating burners

其它特殊烧嘴：各类点火烧嘴、点火器、大气烘炉烧嘴、化渣烧嘴

- 适用燃料：Mix-gas、COG、NG、LG、液态燃料等

Other special burners: varieties of igniting burners, ignitors, atmospheric heating-up burners and slag-smelting burners

- Applicable fuel: Mix-gas, COG, NG, LG and liquid fuel, etc

常用热工设备 Conventional thermal equipment

三通自动换向阀 (专利产品)

- 具有响应时间短、密封性能优良、使用寿命长、维护方便等特点，广泛应用于蓄热式燃烧系统
- 型号：DN150-DN1000

Automatic 3-way reversing valve (patented)

- Characterized by short response time, good sealing, long service life, easy maintenance and so on is widely used for regenerative combustion system
- Type: DN150-DN1000



三通换向阀
3-way reversing valve

高效节能高温换热器

- 总结多年工程经验和用户使用反馈，自主研发的高效节能高温换热器，具有安全可靠，节能高效等特点
- 换热温度最高可达 650℃，换热管材可根据烟气成分个性化设计，另有多项细节优化设计

High-efficient, energy-saving high-temperature heat exchangers

- Based on the engineering experiences and customers' feedback opinions for many years, the independently-developed high-efficient, energy-saving high-temperature heat exchangers are characterized by safety, reliability, energy-saving and high efficiency, etc.
- The highest heat-exchanging temperature is up to 650℃. The heat-exchanging tubes can be individually designed according to the fume compositions and more optimized detailed designs are additionally included



高效换热器
High efficient heat exchanger

风机出口压力自动调节平衡阀 (专利产品)

- 利用连通管效应，使得并联的多台风机处于动态平衡出力状态，避免喘震、偏载等现象

Automatic pressure regulating balanced valve (patented)

- Due to the effect of communicating tubes, the fans in parallel are in the state of dynamic balance output to avoid such phenomena as surge and unbalanced loading, etc.



风机出口压力调节阀
Automatic pressure regulating valve

硅钢炉液态出渣设备 (专利产品)

- 高温硅钢加热炉液体排渣系统专用设备，具有液渣流动性好、节能环保等特点

Liquid slag discharging equipment for silicon steel furnace (patented)

- Dedicated equipment for liquid slag discharging system for high-temperature silicon steel reheating furnace is characterized by good flow of liquid slag, energy-saving and environmental protection, etc.



液态出渣
Liquid slag discharging

各式特殊阀门

- 包括电动 / 电液驱动烟道闸板、高温排烟阀门、超小口径蝶阀等

All kinds of special valves

- Inclusive of electric / electrohydraulic flue duct driving gate valve, high-temperature fume exhaust valve and super-small-diameter butterfly valve, etc.



高温烟气调节阀
High-temperature fume regulating valve

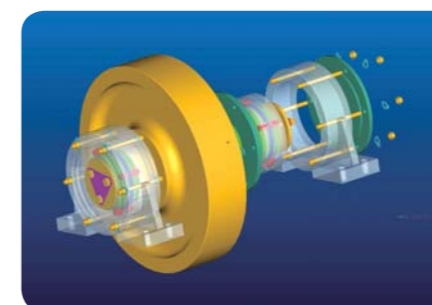
其它常用设备 Other conventional equipment

液压驱动步进机械 (配蓄能器)

- 辊轮斜坡式液压驱动步进机械
- 具有运行平稳、无跑偏、无振动等优点，可实现物料的轻拿轻放软接触
- 适用于棒材、线材、板坯等步进加热炉和热处理炉

Hydraulically-driven walking mechanism (with accumulator provided)

- Roller ramp type hydraulically-driven walking mechanism
- Characterized by smooth operation, with no off-set and vibration, can handle materials carefully and contact softly
- Applicable to the walking type reheating furnace and heat treatment furnace for steel bars, wire rods and slabs, etc.



步进机械零件
Walking mechanical parts



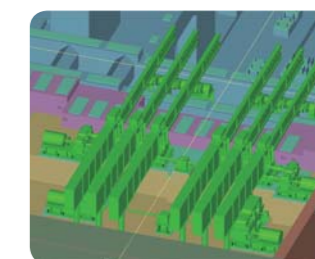
步进机械
Walking mechanism

装出钢机

- 驱动形式：液压式、电动式或平移电动、升降液压
- 广泛应用于端进端出大棒、板坯加热炉装出料系统

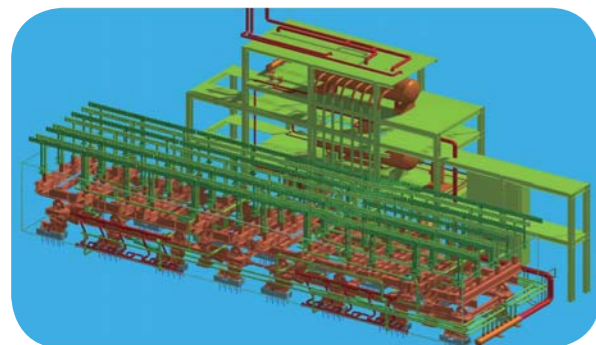
Steel charging and discharging machines

- Driving type: hydraulic, electric or electric translation, hydraulic lifting
- Widely used for the charging system and discharging system of the end-charging and end-discharging reheating furnaces for large bars and slabs



装出钢机
Steel charging and discharging machines

长寿水梁及汽化冷却系统
Long-life water lintel and evaporative cooling system



长寿水梁系统
Long-life water lintel system

推钢机

- 液压驱动、定位准确、运行可靠
- 广泛应用于棒线材侧进加热炉上料系统

Pusher

- Hydraulically driven, accurate positioning, reliable operation
- Widely used for the charging system of the side-charging reheating furnace for steel bars and wire rods

炉内悬臂辊道

- 高合金钢炉内水冷悬臂辊道，运行可靠，使用寿命大于2年
- 最大规格：辊径400mm

Cantilever roller table inside furnace

- Water-cooled cantilever roller table inside high alloy steel furnace with its service life of more than 2 years is operated reliably
- Maximum specification: roller diameter 400mm

高温硅钢热处理专用长寿内罩

- 性能和寿命优于进口产品

Dedicated long-life inner hood for heat treatment of high-temperature silicon steel

- The performance and service life are better than the imported product



专用内罩一
Dedicated inner hood



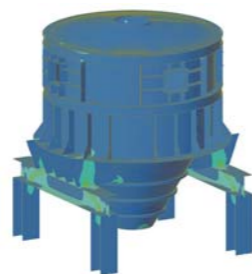
专用内罩二
Dedicated inner hood

HDRI 高温储料罐

- 高温还原铁粒存储设备，应用于马来西亚某钢厂

HDRI high-temperature storage tank

- Storing equipment for high-temperature reduced iron particles is used for a steel plant in Malaysia



HDRI 高温储料罐
HDRI high-temperature storage tank

各类辊道、溜槽

All kinds of roller tables and chutes

各类水封设备

All kinds of water sealing devices

设备成套供货 Supply of complete set of equipment

各式步进梁式加热炉

- 棒线材步进梁式加热炉
- 大型热轧板坯步进梁式加热炉
- 大型中厚板步进梁式加热炉
- 高温硅钢热轧步进梁式加热炉等

All kinds of walking beam reheating furnaces

- Walking beam reheating furnace for steel bars and wire rods
- Walking beam reheating furnace for large hot-rolled slabs
- Walking beam reheating furnace for large plates
- Walking beam reheating furnace for hot rolling of high-temperature silicon steel and so on



大型热轧板坯步进梁式加热炉
Walking beam reheating furnace for large hot-rolled slabs



棒线材步进梁式加热炉
Walking beam reheating furnace for steel bars and wire rods

取向硅钢电磁感应加热炉炉台、炉床以及升降设备（专利产品）

Furnace table, bed and lifting equipment of electromagnetic induction reheating furnace for oriented silicon steel (patented)



硅钢均热炉用立式水梁及提升设备
Vertical water lintel and lifting equipment for silicon steel soaking pit

取向硅钢高温环形热处理炉

High temperature annular heat treatment furnace for oriented silicon steel



取向硅钢高温环形热处理炉
High temperature annular heat treatment furnace for oriented silicon steel

辊底式、台车式热处理炉

Roller hearth and pallet type heat treatment furnaces



辊底式热处理炉
Roller hearth type heat treatment furnace